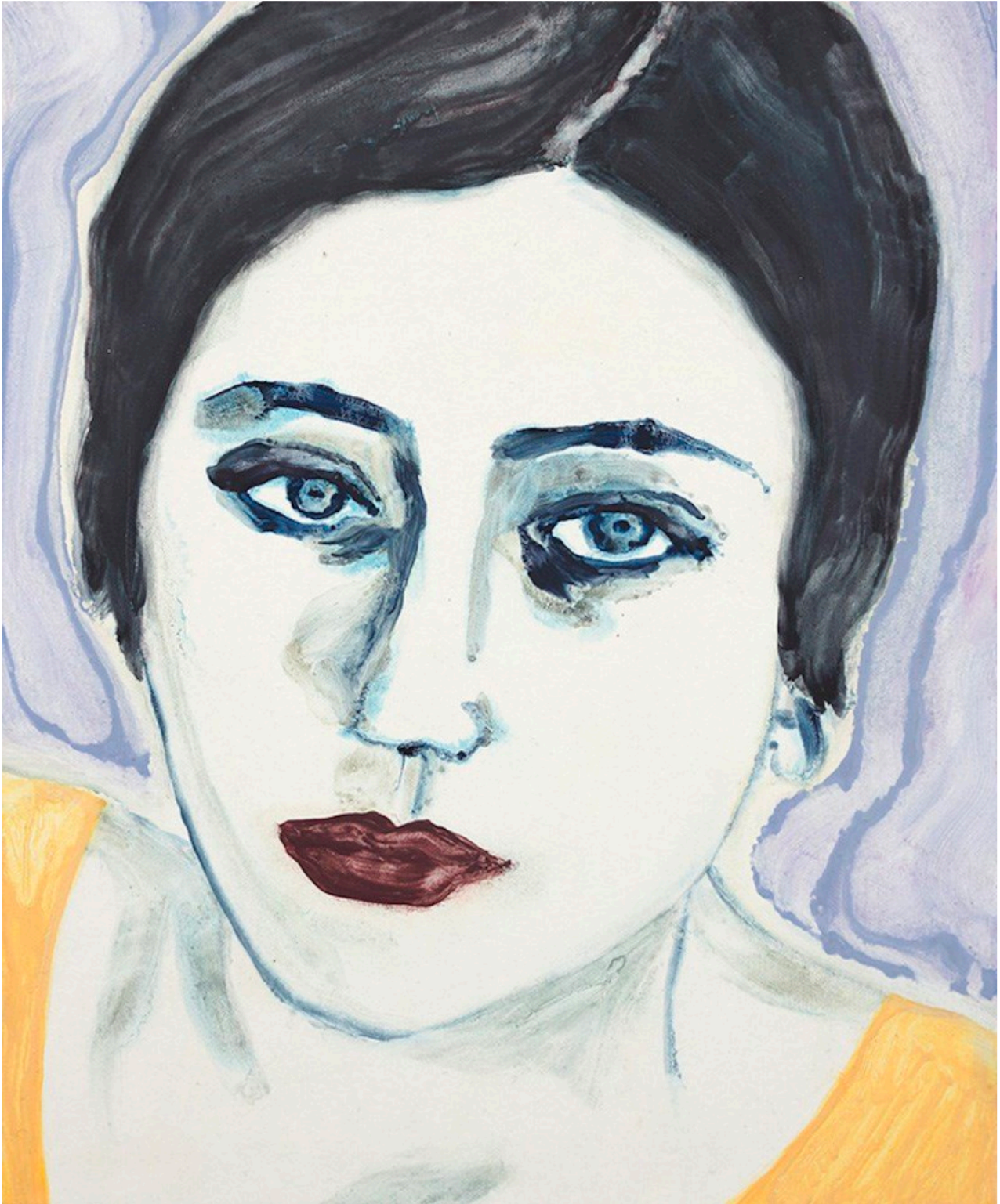


Sina Oberhaensli at Tony Wuethrich Galerie



Sina Oberhaensli, *Ohne Titel* (2020). Courtesy of Tony Wuethrich Galerie.

Basel-born artist Sina Oberhaensli paints intimate, closely framed portraits of young women, many of whom are her friends. The women in these images are confident, seemingly intelligent, and perhaps already a bit melancholic and jaded. At times they seem like characters from a 100 years ago, brought suddenly into the present. This might be due in part to Oberhaensli's decidedly cool color palette—the subjects' theatrically pale complexions bring to mind Henri Toulouse-Lautrec's Montmartre revelers—but also more contemporary influences, including the works of Elizabeth Peyton and Marlene Dumas.